

## Supplementary Data

---

# Salivary Tau Species are Potential Biomarkers of Alzheimer's Disease

Min Shi<sup>a</sup>, Yu-Ting Sui<sup>a</sup>, Elaine R. Peskind<sup>b,c</sup>, Ge Li<sup>b</sup>, HyeJin Hwang<sup>a</sup>, Ivana Devic<sup>a</sup>,  
Carmen Gingham<sup>a</sup>, John Scott Edgar<sup>d</sup>, Catherine Pan<sup>a</sup>, David R. Goodlett<sup>d</sup>, Amy R. Furay<sup>a,b</sup>,  
Luis F. Gonzalez-Cuyar<sup>a</sup> and Jing Zhang<sup>a,\*</sup>

<sup>a</sup>*Department of Pathology, University of Washington School of Medicine, Seattle, WA, USA*

<sup>b</sup>*Department of Psychiatry and Behavioral Sciences, University of Washington School of Medicine, Seattle, WA, USA*

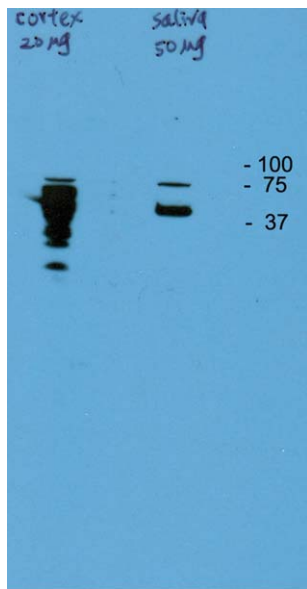
<sup>c</sup>*Mental Illness Research Education and Clinical Center, Veterans Affairs Puget Sound Health Care System, Seattle, WA, USA*

<sup>d</sup>*Department of Medicinal Chemistry, University of Washington School of Pharmacy, Seattle, WA, USA*

Accepted 12 June 2011

---

\*Correspondence to: Jing Zhang, Department of Pathology, University of Washington School of Medicine, HMC Box 359635, 325 9th Ave, Seattle, WA 98104, USA. Tel.: +1 206 897 5245; Fax: +1 206 897 5452; E-mail: zhangj@uw.edu.



Supplementary Figure 1. Detection of tau proteins in human saliva with Western blotting. Proteins from pooled control saliva were precipitated with 20% trichloroacetic acid, washed with cold acetone and dissolved with a urea/loading buffer (8 M urea, 2% sodium dodecyl sulphate [SDS], 10% glycerol, 62.5 mM Tris, pH 6.8). Protein concentrations were measured using a BCA protein assay kit (Pierce). 50  $\mu$ g of proteins from saliva and 20  $\mu$ g of proteins extracted from human brain (cerebral cortex) were loaded onto SDS-PAGE and transferred to a PVDF membrane. The membrane was immunoblotted with the biotinylated detection antibody from the INNO-BIA AlzBio3 Luminex kit (Innogenetics) for overnight at 4°C followed by horseradish peroxidase-conjugated avidin for 1 h at room temperature.